

# ARAC NEWS-LET



News-Release of the Akatarawa Recreational Access Committee Inc

Issue 11.2, October 2016

Two items in this issue:-

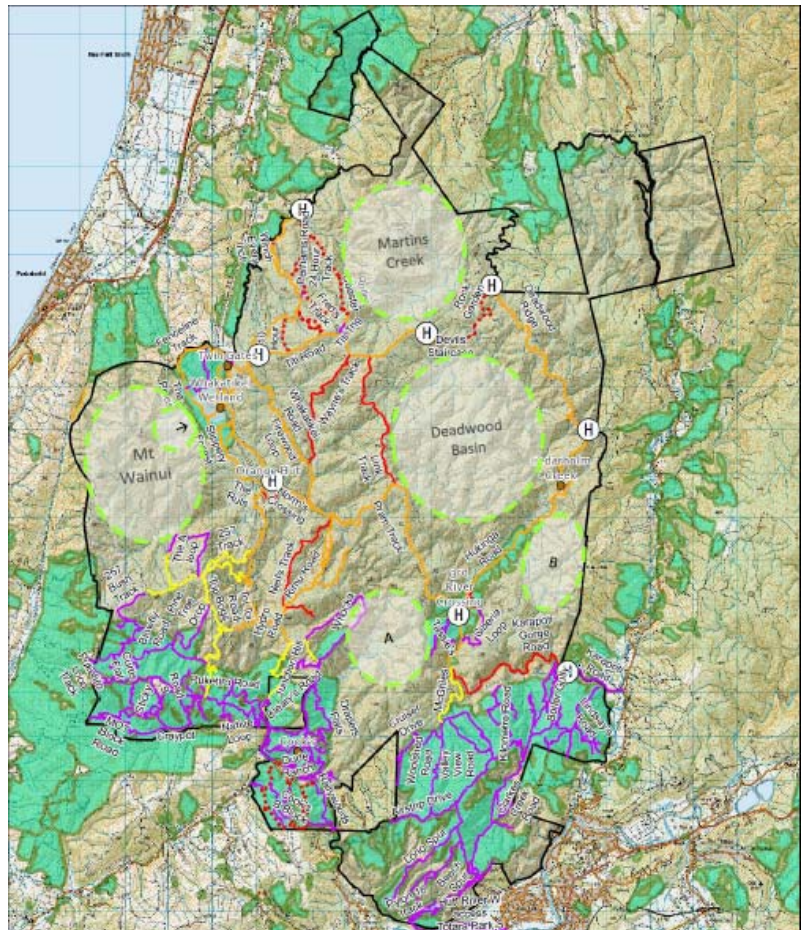
## 1. Map 20 is Approved by Full Council

Wellington Regional Council has been consulting on a more comprehensive map that defines in far greater detail the tracks and trails that can be used by motorised recreation with the Akatarawa Forest.

Primarily raised as an issue by ARAC following GW selling the cutting rights to plantation forest to RMS LLC, with P F Olsen managing day-to-day activities. It was apparent that the existing Map 20 contained within the 2010 Parks Network Plan (PNP) was completely inadequate as far as plantation tracks were concerned.

Such deficiency could have allowed P F Olsen to close some of our most valuable recreational resources.

So, it's taken nearly 2 years and hundreds of man-hours, but at last on 28 September 2016, a revised Map 20 was officially adopted by Council to replace the one contained in the PNP



The originally proposed Map 20 can be downloaded from our website

<http://arac.org.nz/index.php/assets/Downloads/GW-Proposed-Map-20-25Mb.pdf> (caution 25Mb), and the

final version as passed by Council <http://arac.org.nz/index.php/assets/Downloads/GW-Approved-Map-20.pdf>

## 2. Karori Stream Impassable (*pro tem*)

As you will see from these photos the track that hugs the cliff face at the mouth of Karori stream is out of action.

Although the lagoon was drivable yesterday heavy rain in the Karori catchment could change things quite quickly.

You may wish to circulate word to your motorised colleagues.

We will keep you informed if we hear anything substantive.



### **Any Other News?**

Anything we need to know about? Anything you want to know about? Email [info@arac.org.nz](mailto:info@arac.org.nz)